

High:
Bureaucracy

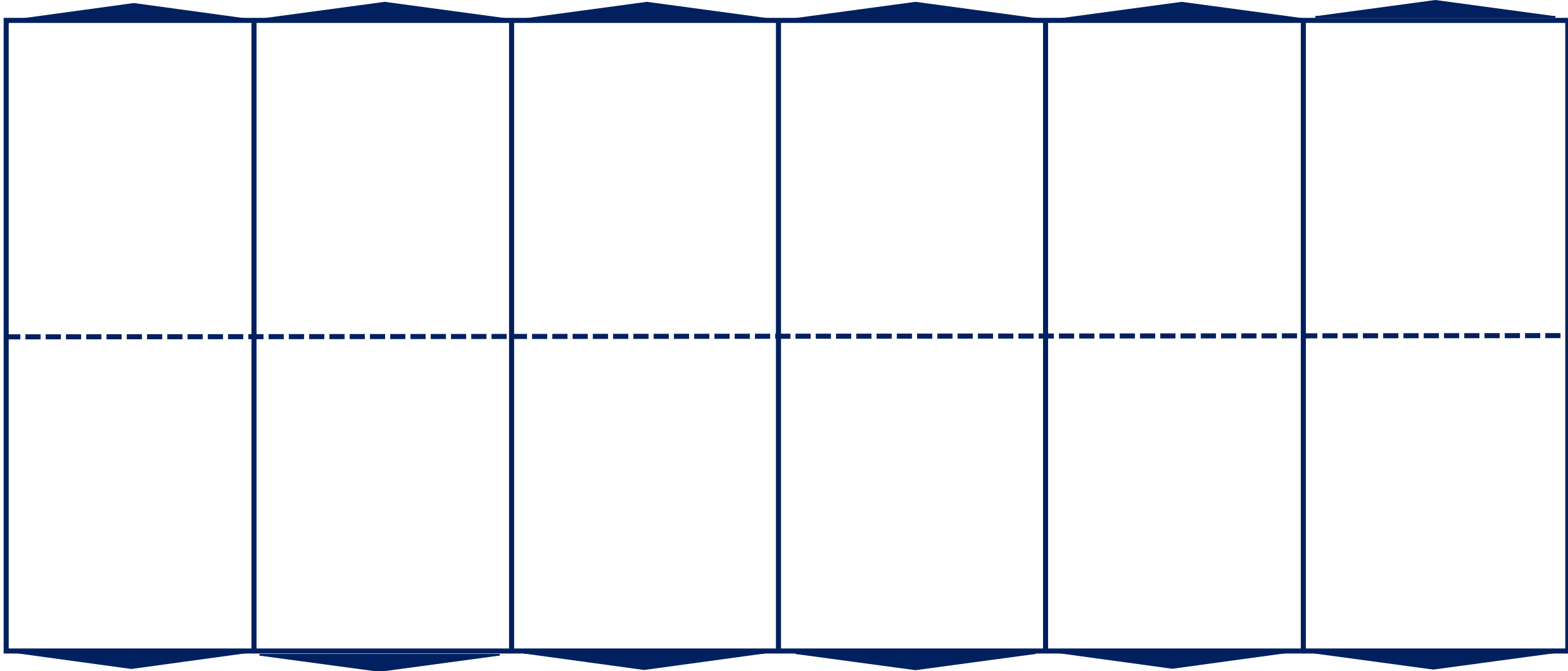
Centralized: Bureaucracy

High:
Technical

Narrow:
Detailed Work

High Need for Coordination:
Frequent, Less, Formal, Face-
to-Face

Stable and Fixed:
Traditional



Low:
Relational

Decentralized: Relational

Low:
Unskilled, Service

Wide: Routine,
Few Exceptions

Low: Infrequent, More
Formal, Mediated

Dynamic & Fluid:
"New Economy"